

The plant list

Ferns

- Asplenium scolopendrium* 'Angustatum'
- Asplenium trichomanes*
- Athyrium otophorum* var. *okanum*
- Blechnum spicant*
- Dryopteris filix-mas* 'Cristata'
- Onoclea sensibilis* red-stemmed form
- Polystichum setiferum* 'Congestum'
- Polystichum setiferum* 'Congestum Cristatum'
- Polystichum setiferum* 'Grandidens'
- Polypodium vulgare* 'Bifidocristatum'

Grasses

- Carex oshimensis* 'Evergreen'
- Deschampsia cespitosa*
- Sesleria autumnalis*

Perennials

- Ageratina altissima* 'Chocolate'
- Alchemilla sericata* 'Gold Strike'
- Anemone thalictroides*
- Aquilegia vulgaris* var. *stellata* 'Ruby Port'
- Aspidistra elatior* 'Lennon's Song'
- Beesia calthifolia*
- Boehmeria japonica* var. *tenera*
- Digitalis* GOLDCREST ('Waldigone'PBR)
- Epimedium* x *rubrum*
- Epimedium* x *versicolor* 'Sulphureum'
- Galega officinalis* 'Alba'
- Geranium maculatum* 'Elizabeth Ann'
- Geranium nodosum* 'Silverwood'
- Geum* 'Blazing Sunset'
- Geum* 'Hilltop Beacon'
- Geum* 'Tales of Hex'
- Hedera helix* 'Francis'

Roses

- Rosa* THE BEE'S KNEES ('Guesbehold')

Trees

- Acer buergerianum*
- Acer campestre*
- Cercis canadensis* subsp. *texensis* 'Oklahoma'
- Staphylea colchica*
- Tilia henryana*
- Ulmus* x *hollandica* 'Jacqueline Hillier'

- Heuchera villosa* 'Chantilly'
- Hosta* 'Cody'
- Hosta* 'Devon Green'
- Hosta* 'Teaspoon'
- Hosta* 'Tot Tot'
- Hosta minor* Goldbrook form
- Iris* 'Tropic Night' (Sib)
- Lamium orvala*
- Ligusticum scoticum*
- Lysimachia paridiformis* var. *stenophylla*
- Maianthemum racemosum* subsp. *amplexicaule* 'Emily Moody'
- Mukdenia rossi* 'Karasuba'
- Rhodohypoxis* cultivars
- Rodgersia podophylla*
- Tellima grandiflora*
- Thalictrum ichangense*
- Thalictrum* NIMBUS WHITE ('Tntnw') (Nimbus Series)
- Thalictrum petaloideum* 'Ghent Ebony'
- Thalictrum rochebruneanum*
- Tradescantia* cultivars
- Waldsteinia ternata*



For the full plant list, scan here

From Chelsea to Chester



Nepenthes bicalcarata

From late autumn, you'll be able to visit the Plant Heritage Missing Collector Garden at its permanent home at Chester Zoo.

The zoo is well known for its amazing animals but has incredible plants too, including five National Plant Collections: tropical pitcher plants (*Nepenthes*), rare cactus species (*Copiapoa*, *Matucana*, *Turbincarpus*) and South American orchids (*Pleurothallidinae*). It's the first UK zoo to be recognised as an internationally important botanic garden by Botanic Gardens Conservation International and is helping to return some of the rarest plants in its collections to the wild.

"We're proud of our longstanding partnership with Plant Heritage and excited to share the Missing Collector Garden with all our visitors. For us, plant conservation and animal conservation go hand in hand."
Phil Esseen, Head of Plants at Chester Zoo

The zoo also has a strong commitment to education and outreach, hosting 120,000 school children each year as part of its International Conservation Academy.

Our thanks

Sponsored by



Designed by



Built by



Plants provided by

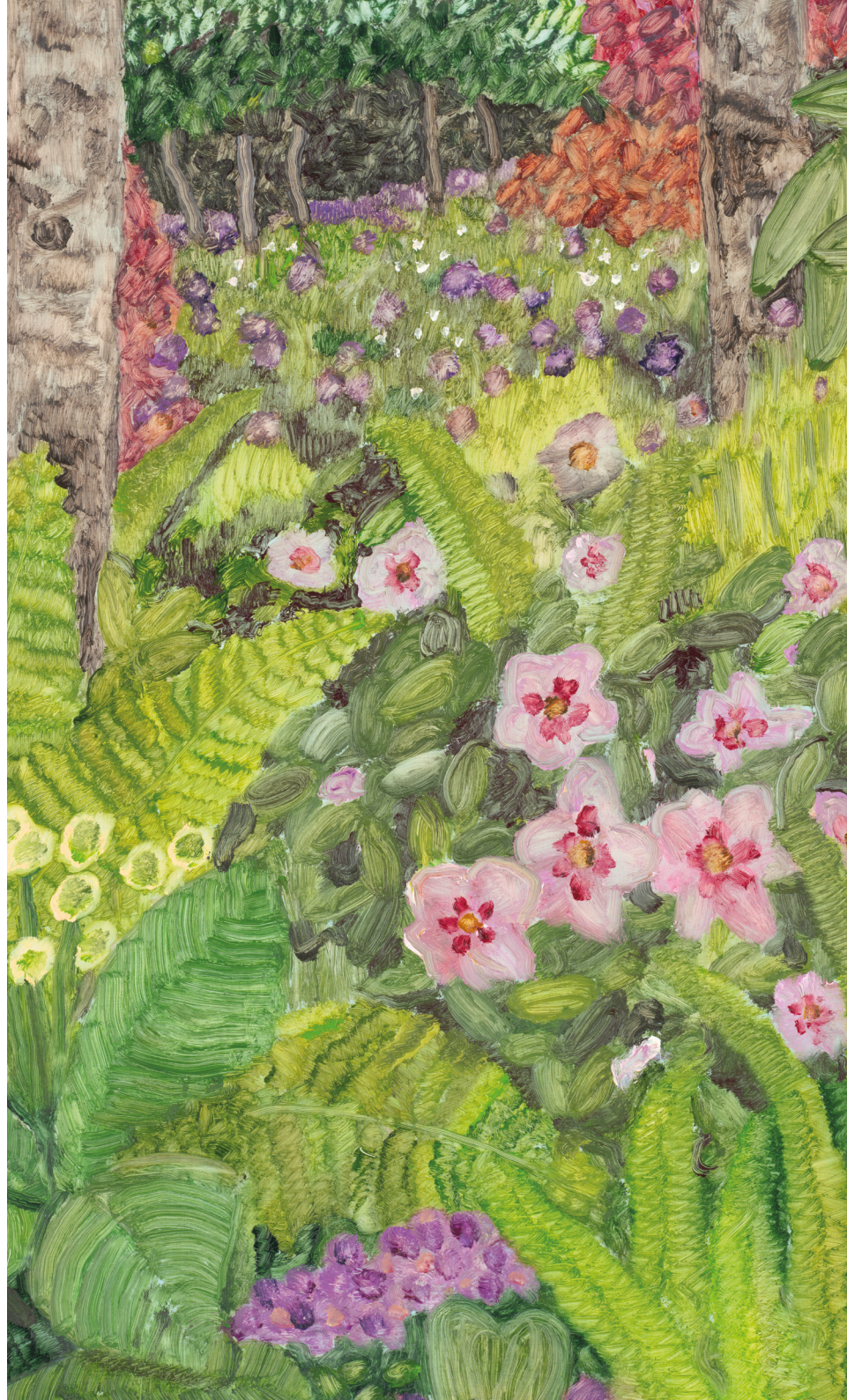


Thank you also to Bennetts Water Gardens, Birchwood Tree and Estate Management, Buckland Cottage Gardens, Collendoorn, Crocus, Primrose Hall Peonies, Rotherview Nursery and many other Plant Heritage National Collection holders who have provided or lent plants.

With special thanks for additional support



Our thanks also to



How you can help



There are lots of ways you can support our plant conservation work:

Join us

Become a member to enjoy our unique publications, plant sales, talks and visits across the UK, including tours of National Collections.

Start a National Collection

Many plant groups are looking for their Missing Collector. Or become a Plant Guardian and look after just one or a few rare plants.

Become a Corporate partner

Highlight your commitment to conservation with your employees and customers by partnering with us.

Make a gift

Please donate today or leave a gift in your Will.

- £25 could help register a new plant in our Plant Guardian scheme
- £50 could help cover travel costs for one of our volunteers who support National Collection holders
- £100 could help us teach skills to care for special plants, like taking cuttings, saving seed or creating plant records

Bid to own an exclusive artwork

Artist Ben MacGregor's painting of the Plant Heritage Missing Collector Garden will be sold by auction in July. @benjamin_macgregor_art. His cover design for this guide was scanned by CHD Ltd - www.culturalheritagedigitisation.co.uk

Plant Heritage is a registered charity, number 1004009/SC041785. Company Limited by Guarantee, registered in Cardiff 2222953.

www.plantheritage.co.uk plantheritage OurPlantHeritage



Scan this QR code or email us at info@plantheritage.org.uk

The Plant Heritage Missing Collector Garden

RHS Chelsea Flower Show 2026 (TR115)

Welcome

Welcome to the Plant Heritage Missing Collector Garden, generously sponsored by Project Giving Back.

Our garden highlights the beautiful and fascinating cultivated plants around us. These plants are part of our shared history, like stately homes or artworks, yet more than half the varieties grown in the past are no longer for sale. If we don't look after them, they could disappear forever.

Our flagship conservation scheme – the National Plant Collections* – is a simple but powerful way to keep plants safe. It's a living library of plants cared for by volunteers. You'll find Collections everywhere from Buckingham Palace to back gardens, schools, parks, even a pub and a prison. Together, we're safeguarding 100,000 plants, but this is just the beginning. Our work is becoming more urgent as climate change and new pests and diseases put more plants at risk.

After nearly 50 years of impact, we've shown that all of us who garden can make a difference, doing what we love. Will you help us?

Gwen Hines, CEO Plant Heritage



Meet the designers



The Planting Design Collective (from left): Sally-Anne Rees, Kate Campbell, William Murray

We're a trio of garden and planting designers, with the shared aim to champion the art of planting design, and its vital role in creating planted spaces that are thoughtful, beautiful and enduring.

As avid plantspeople, we're delighted to be working with the wonderful charity Plant Heritage and bringing their story to the main stage at RHS Chelsea this year. The Plant Heritage 'Missing Collections' campaign was the inspiration behind the garden – as we realised that it's not just National Plant Collections that are missing, it's collectors too.

Plants in our own gardens might seem safer than those in the wild, but they could easily be lost forever if nobody is looking after them.

We need more people to come forward to protect our precious garden plants – and we hope that our RHS Chelsea garden will inspire the next generation of National Plant Collection holders and Plant Guardians.

The garden also celebrates the tireless work of existing National Collection holders, and their commitment to preserving our garden plants for the future. Their generosity in sharing knowledge and plants with us throughout this process has been incredible, and they've been a joy to work with. They are the unsung heroes of horticulture!

Kate Campbell, William Murray and Sally-Anne Rees, The Planting Design Collective

The Missing Collector Garden

A mysterious plant enthusiast, the 'Missing Collector', has vanished, leaving behind an extraordinary collection.

A path of English oak setts leads through a canopy of multi-stem trees. Jewel-toned plants, set against lush green foliage, symbolise the treasures kept safe in Collections. Interesting and unusual examples of *Thalictrum*, *Polypodium* ferns and *Geum* are waiting to be discovered. Alongside them grow plant groups not yet protected in a National Collection, including *Verbascum*, *Aquilegia* and *Deschampsia*.

Two stone sculptures of stacks of books represent the knowledge of Collection holders and museum-style archive drawers display precious plant collections. At the centre of the garden is the bronze Gatti Chair, cast from a tree slowly trained over nearly a decade into its final form by Full Grown



The Gatti chair

artists Alice and Gavin Munro at their orchard in Derbyshire.

This beautiful chair invites you to imagine yourself immersed in the garden and to consider: could you be the Missing Collector?

The stone structures were created by stonemason Adam Burford, and the garden was built by Crowton Rowarth Ltd and Gareth Wilson Garden & Landscaping Consultancy. The wood was provided by Grosvenor TimberWorks and All Green. The Gatti chair sculpture was kindly lent by Sarah Myerscough Gallery.

The majority of the garden's plants were grown by How Green Nursery, with some precious plants on loan from National Collection holders. Most trees and shrubs were provided by New Wood Trees. Hedges were provided by Big Hedge Co.

Key plants in the garden



Aquilegia vulgaris var. stellata 'Ruby Port': Red flowers with yellow stamens. Self-seeds to create naturalistic planting schemes. There is no National Collection of *Aquilegia* – could you be the Missing Collector?



Boehmeria tricuspis: Member of the nettle family, with an interesting leaf and tall red stems in late spring. Useful for tricky spots. Chosen by Philip Oostenbrink, head gardener at English Heritage's Walmer Castle, from his National Collection, who has also lent *Aspidistra*.



Geum 'Tales of Hex': Beautiful pale lemon-coloured flowers from spring to early summer and semi-evergreen foliage. A favourite of Sue Martin in Kent who holds one of two *Geum* Collections.



Athyrium otophorum var. okanum: Yellow green with a dark red/purple midrib, perfect for woodland settings. Safely in National Collections at Treborth Botanic Gardens and Edge Hill University.



Cercis canadensis subsp. texensis 'Oklahoma': Compact tree with glossy green foliage and prolific dark pink flowers when grown in a hot climate. Recommended by Hugh Povey who holds a National Collection of *Cercis canadensis* in Cumbria, as does Stuart Senior in Somerset.



Ligusticum scoticum (Scots lovage): Dark red and green stems, with small white flowers in summer. It has glossy scalloped green leaves divided into leaflets.



Mukdenia rossii 'Karasuba' (Crimson Fans): Unusual ground cover plant, which turns a fabulous red colour in autumn. Dense clusters of starchy, creamy-white flowers in spring. Works well in shade or semi-shade.



Sesleria autumnalis (autumn moor grass): Evergreen/semi-evergreen grass that's great for structure and linking different areas. Tolerates a wide range of soils, including dry shade. Not yet in a National Collection.



Thalictrum petaloideum 'Ghent Ebony' (meadow rue): Purple/brown foliage carries fluffy white flowers. Performs best in moist, part-shaded sites. Collection cared for by Nicholas Guntrip-Hook, who says it's a great creative outlet.



Rosa 'The Bee's Knees' ('Guesbehold'): Yellow flowers with deep pink and orange centres that turn cream with a pink middle. Cared for by Daniel Myhill in his National Collection of *Rosa persica* hybrids.



Staphylea colchica (ivory flowered bladdernut): Large shrub or small tree, rarely seen in UK gardens but good for our changing climate. Long clusters of small white fragrant flowers, followed by distinctive puffed fruit. Collection cared for at Westonbirt, The National Arboretum.



Verbascum 'Clementine': Bred by the former National Collection holders of *Verbascum*, Vic Johnstone and Claire Wilson, and first launched at the RHS Hampton Court Flower Show in 2003. We are seeking a new Collection holder.

The people behind the plants

Plant Heritage is a network of thousands of members and hundreds of dedicated volunteers who share a passion for plants, like Maria Heffer who has a National Collection of Geum.

National Collections at the show, like Hogarth Hostas and Primrose Hall Peonies who have provided plants for the garden. Look out for our distinctive green plaques.

Did you know?

There can be more than one National Collection for each plant group? It's one of the ways we're future proofing our work, by providing a back-up in case of crises like floods and storms, or if someone decides to withdraw their Collection. Collections can also be held by community groups, which is a great way for more people to get involved.



Powered by Persephone

Data about the plants in National Collections is kept safe in our award-winning digital records system Persephone. Powerful, yet simple to use, Persephone is now available for anyone to use on subscription. Funds raised support our work as a charity. Find out more at: planteritage.org.uk/persephone

You'll also find lots of award-winning nurseries who hold



Barry Clarke and his Rubus



Maria Heffer and her Geum