

Catalogue of the National Plant Collection of:
Aspidistra elatior & *sichuanensis*
cultivars.

Including additional plants from Philip Oostenbrink's collection.



Philip Oostenbrink researching *Aspidistra* in Japan.

Philip Oostenbrink's lent us some unusual *Aspidistra* as well as *Boehmeria*, a member of the nettle family. He's recently been in Japan researching plants from his National Collections.

Aspidistra elatior

An evergreen rhizomatous perennial to 60cm, with glossy dark green, leathery, lance-shaped leaves and flowers borne at soil level in early summer. Native to southern Japan.

***Aspidistra elatior* 'Akebono'**

This very old Japanese cultivar has broad glossy leaves which are elegantly streaked with yellow along the centre of each leaf. The variegation is less consistent in young plants.

***Aspidistra elatior* 'Asahi'**

On established plants, the mature leaves have cloudy white tips. The colour develops best on established plants - newly divided plants tend to go green!

A small growing form of the species - there is a tall growing plant with a similar pattern called 'Snowcap'. Apart from height the other difference is that 'Snowcap' colours up as the leaf unfurls, 'Asahi' develops the white after the leaf has unfurled (so starts off green).

***Aspidistra elatior* 'Bubba'**

Bubba is one of the most vigorous forms of elatior. More vigorous in every way.

***Aspidistra elatior* 'Diamond'**

Small spotted form. Like a dwarf Hoshi-Zora.

***Aspidistra elatior* 'Fuji No Mine'**

Very tall elatior with long leaf stalks. At the base of the leaf it has a yellow stripe left and right and along the entire leaf there is a central yellow stripe.

***Aspidistra elatior* 'Ginga Giant'**

Available variously in the trade under different species names: *elatior*, *lurida* and *fasciaria*. The collection holder disfavours *elatior* as the species. The leaves of this cultivar extend up to 1m tall, making it larger than the otherwise similar 'Ginga'. The leaf blades are relatively narrow and heavily spotted.

***Aspidistra elatior* 'Gold Feather'**



Variable yellow variegated elatior.

***Aspidistra elatior* 'Golden Sunray'**



Particularly upright and narrow leaves, leaves only to about 4" in width, up to 24" in length. Deep glossy green with narrow, pale streaks.

Description from Cistus Nursery.

***Aspidistra elatior* 'Hakusen'**



Introduced by Pepiniere des Avettes. Distinctly variegated white/yellow. Large leaf.

***Aspidistra elatior* 'Hoshi-zora'**



Possibly a synonym for 'Starry Skies'. Hoshi Zora means Starry Light of Dawn. A quite wide spotted leaf. The spots are small and quite sparse.

***Aspidistra elatior* 'Ippin'**



The name means 'Select'. A small, variegated form.

***Aspidistra elatior* 'Lennon's Green'**



Robin Lennon from Florida grows foliage for the cut flower industry. He selected this elegant narrow leaved form from his *Aspidistra* fields!

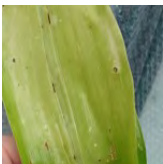
It seems to grow even more vigorously than the ordinary form of *A. elatior*.

***Aspidistra elatior* 'Lennon's Song'**



A selection by Robin Lennon of Florida. Tall narrow leaves, highlighted by a golden central flash. It is vigorous and fairly distinctive. It will often produce flowers at the base.

***Aspidistra elatior* 'Mangetsu'**



A very old Japanese selection, the green and white striped leaves are frosted with white speckles. As the leaves age they become greener.

Name means 'Full Moon'.

Description from johnjearrard.co.uk

***Aspidistra elatior* 'Morning Frost'**



Elatior with frosted, mottled leaves, sometimes with a central white stripe.

***Aspidistra elatior* 'Okame'**



This variegated cultivar has large white bands along the leaf. When grown in a lighter position this variegation will remain stable, yet variable. In darker spots there is a chance of them reverting to all green. When this occurs the green parts should be taken off as otherwise they will take over.

***Aspidistra elatior* 'Omi-misho-de'**



Form of Variegata with half the leaf green, half the leaf pure white. Scorches easily and unstable as in shooting up normal striped leaves.

***Aspidistra elatior* 'Sei Ryu Ho'**



A smallish variety with yellow spots and white streaks at the tips of the leaves.

The name means 'Green Dragon Hall'

Description from johnjearrard.co.uk

***Aspidistra elatior* 'Sekko-kan'**



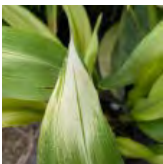
A variegated cultivar with an abundance of white stripes all along the leaf. When it matures the tips of the leaves will turn white completely. An old Japanese cultivar with great vigour.

***Aspidistra elatior* 'Shiroji'**



Introduced by Pepiniere des Avettes as a distinct variegated form.

***Aspidistra elatior* 'Snow Cap'**



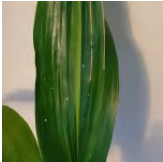
Very similar to Asahi, but taller and the leaves unfurl with the white tips. Asahi doesn't colour up until leaves have unfurled (so starts off with green leaves).

***Aspidistra elatior* 'Starry Night'**



This is a graceful and enduring Japanese variety, treasured for its tall, upright evergreen leaves generously speckled with golden yellow markings, evoking a clear night sky scattered with stars. Reaching up to 85cm, it offers an elegant vertical accent for deep shade and dry spots. Known in Japan as 'Hoshi-zora' (meaning "starry sky"), this old cultivar thrives with minimal fuss and remains an excellent choice for shaded borders, containers, or underplanting beneath trees.

***Aspidistra elatior* 'Stars and Stripes'**



The leaves have stripes and spots. Unlike Amanogawa these stripes are very distinct, a bit like Fuji no Mine (though the plant is smaller).

***Aspidistra elatior* 'Suisho'**



A tiny elfin little plant, with strong white striped leaves. Grows to about 15cm tall. The name means 'Crystal'. It is thought to be a tiny sport from 'Ippin'.
Description from johnjearrard.co.uk

***Aspidistra elatior* 'To Ryu Mon'**



This old Japanese cultivar is one of the very few with a stable marginal variegation. The upper portion of the leaf has a clean white band at the edge.

***Aspidistra elatior* 'Variegata'**



'Variegata' is allegedly synonymous with 'Okame' but the 'Okame' plants in the National Collection are distinctly different to the plants named 'Variegata'.

***Aspidistra elatior* 'Zebra'**



A dwarf form with yellow stripes. Almost like a dwarf form of Lennon's Song.

***Aspidistra sichuanensis* 'Beauty Spot'**



A clump forming cultivar that has glossy leaves to 20cm, with blotchy yellow markings. Flowers are purple and appear in late summer to autumn.

***Aspidistra sichuanensis* 'China Sun'**



This cultivar originates from a collection made by Dr Jim Waddick in Sichuan, China. It was introduced into cultivation by Plant Delights Nursery, North Carolina, USA in 1999. Possibly the most vigorous of the China series. When mature this low growing species is capable of producing heavily speckled leaves up to 30cm long. Attributed often to *A. typica* but believed to be more accurately *A. sichuanensis* by the National Collection Holder.

***Aspidistra sichuanensis* 'Crispa'**



This cultivar has yellow-spotted leaves up to 60cm long with elegant, pendant tips.

***Aspidistra sichuanensis* 'Giant'**



This cultivar was introduced into cultivation by Cedric Basset through his Avette Nursery in France. It is a form of the species that he collected in China and has exceptionally long petioles, combined with large narrowly ovate leaf blade to well over 1m tall.

***Aspidistra sichuanensis* 'Gold Lancer'**



This cultivar is a 2015 Plant Delights/Juniper Level Botanic Garden introduction, and forms a clump of 5-8cm wide, pendent-tipped leaves that can reach 80cm in length. The very dark green foliage of *Aspidistra* 'Gold Lancer' is nicely highlighted by large yellow central bands.

***Aspidistra sichuanensis* 'Golden Freckles'**



This cultivar has heavily spotted leaves and was named by Plant Delights Nursery (at Juniper Level Botanic Garden) in 2014. The stalk is vertical, but the leaf blade tends to angle sideways, making a really nice clump in a woodland garden. Minimal leaf burn down to -12 °C.

***Aspidistra sichuanensis* 'Kinboshi'**



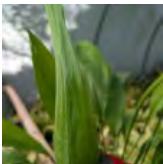
Synonymous with 'Chromatographic'. The glossy green leaf is conspicuously marked by lots of white spotting, each spot surrounded by a halo.

***Aspidistra sichuanensis* 'Misty Spot'**



Named for the sparse and diffuse variegated spots on the leaves.

***Aspidistra sichuanensis* 'Rarely Spotted'**



This cultivar has bright green stems, topped by glossy dark green leaves that have light random spotting. Height reaches 60cm and spread is 60cm.

Aspidistra sichuanensis 'Rawhide'



Plantsman Ted Stephens of Nurseries Caroliniana brought this unusual selection of the species from the garden of the late variegated plant collector/author, Dr. Yokoi of Japan. The leaves have the thickness of hard plastic. This is most likely due to a ploidy mutation - probably a tetraploid. The 50cm tall stalks include 25cm long x 10cm wide leaf blades, heavily spotted with yellow. It is virtually indestructible and looks and feels artificial. In the ground, foliage burn may occur below -9°C.

Aspidistra sichuanensis 'Rosemoor Form'



Aspidistra sichuanensis 'Spek-tacular'



This cultivar is a selection purchased at a flower market in Sichuan, China by Linda Guy, and first introduced commercially in 2012 by Plant Delights. *Aspidistra* 'Spek-tacular' makes an attractive clump of 40" long, dark green leaves with arching tips. Each evergreen leaf is adorned with the most abundant yellow spotting of any clone of *Aspidistra sichuanensis*. The evergreen 32" tall clumps look great all season, adding a wonderful bold texture to the woodland garden.

Aspidistra sichuanensis 'Spotlight'



With a distinct pattern on its leaves of dense light spotting and a broad central stripe of light green and thin dark lines (like a spotlight).

Aspidistra sichuanensis 'Spotty'



This exceptional clone was selected by Sean Hogan of Cistus. Unlike *Aspidistra elatior*, whose foliage remains upright, the leaves on *Aspidistra sichuanensis* rise upward, only to arch strongly outward as they mature. Dark green leaves to 35cm with large pale green diffused spots on them.

Aspidistra sichuanensis 'Thin Slice'



This cultivar is a Plant Delights/JLBG introduction of a selection of the Sichuan, China native cast iron plant that was shared by plant explorer Ozzie Johnson. Named after the foliage, which is a very narrow form of *Aspidistra sichuanensis*. The 18" long, arched dark green leaves are faintly spotted with a few muted gold spots.

Aspidistra sichuanensis 'Warp Drive'



This cultivar is a 2024 Plant Delights/JLBG introduction of a superb clone of the species purchased in the early 2000s, un-named, from a Chinese nursery. The 16" long x 4" wide leaf blades (not including the stalk, are heavily spotted with nice sized golden spots. *Aspidistra* 'Warp Drive' forms a 26" tall clump (6" shorter than *Aspidistra* 'Spek-tacular') and is extraordinarily similar to *Aspidistra* 'Yellow Hammer' and may in fact be the same clone.

***Aspidistra sichuanensis* 'Well Spotted'**



A well spotted selection of this species.

***Aspidistra sichuanensis* 'Yellow Hammer'**



Aspidistra sichuanensis 'Yellow Hammer' is a stunning cast iron plant collection from the late California plantsman, Gary Hammer. The tropical-looking 30" long x 4" wide green leaves are heavily-spotted creamy yellow...probably the brightest spotted cast iron plant.
